

A large, spreading tree with vibrant yellow flowers dominates the center of the image. The tree's branches are thick and dark, contrasting with the bright yellow blossoms. In the background, a brick building with large, arched white-framed windows is visible. A paved path made of light-colored bricks leads from the foreground towards the building. To the left of the path is a green lawn, and to the right is a garden bed with dark mulch and some small plants. The sky is a clear, bright blue.

The Friends of Holland Park

Spring 2020

Membership card enclosed
if you have paid for 2020



Dates for your Diary

All FHP events in the diary are printed in **bold**; unless otherwise stated, the meeting place is outside the stable yard (the meeting places for the tours will be printed on your ticket). Events organised by the Ecology Service of RBKC are listed as 'ES'; where FHP have sponsored them, this is indicated; unless otherwise stated, the meeting place is in the Ecology Centre near the Adventure Playground. Some must be booked, in which case please call 020 7938 8186 or e-mail ecology.centre@rbkc.gov.uk. There is a charge for those marked £. In order that some Ecology events can be free for participants, the Friends will continue to sponsor the walks and talks that are led by independent experts in their field, and ensure their costs are covered.

Holland Park Conservation Volunteer days (for adults) are every third Saturday of the month from 10.30am to 3.30pm; meet outside the café. No specialist skills are required, and this is your chance to make new friends while getting healthy outdoor exercise: digging, chopping and planting in the wilder parts of the park, and you do not have to stay for the whole time. Tea, gloves, tools and instruction are provided. Wear sturdy shoes and old clothes, and bring waterproofs and your lunch. For further information from the Ecology Team visit www.rbkc.gov.uk/ecology, call 020 7938 8186 or e-mail ecology.centre@rbkc.gov.uk

Sat 7 Mar	History tour , with Rowan Freeland £8. Please book on our website, or with Liz Merica (<i>see inside back cover</i>).	11am
Sat 21 Mar	ES. Beginner's Guide to bird-watching, David Darrell-Lambert (sponsored). Must book	9-11.30am
Thurs 2 Apr	ES. Spring Botany Walk, Dr Mark Spencer (sponsored). Must book	6-7.30pm
Sat 18- Sun 26 Apr	Annual Art Exhibition (<i>see p.5</i>), in the Orangery	
Wed 22 Apr	Annual General Meeting , in the Orangery	7.30pm
Fri 24 Apr	Ancora Duo concert (<i>see p.3</i>), in the Orangery	7.30pm
Sat 25 Apr	ES. Dawn Chorus Bird Walk, David Darrell-Lambert (sponsored). Must book	5-7am
Wed 6 May	ES. Spring Bat Walk (sponsored). Must book	8.30-10pm
Thurs 14 May	ES. House Sparrow Talk, Daria Dadam (sponsored). Must book	6-7.30pm
Thurs 21 May	ES. Common Lizard Talk (sponsored). Must book	6.30-8pm
Thurs 28 May	ES. Amphibian Walk (sponsored). Must book	6.30-8pm



Friday, 24 April, at 7.30pm in the Orangery

Last April our annual spring recital, taking place during our art exhibition in the Orangery, was performed by the flute and guitar duo, The Ancora Duo: respectively Anne Allen and Sarah Freestone. This duo was so popular that we have asked them to perform for us again this year. The programme is still a secret except that, by popular request, we have been promised the tango by Piazzolla that was so loved last year. Tickets at £18, to include wine and canapés, can be ordered on the enclosed order form or via our website.

Pimm's in the Park

Wednesday, 8 July 2020, 6-8pm, in the marquee east of the Dutch Garden

Come and join us for our annual summer party in the marquee on the raised terrace overlooking the formal garden. In this lovely venue this is the only Friends event that is exclusively for members and their guests, plus invited councillors, council officers and the parks police, in appreciation of their support. The party is always much enjoyed, and it is a good opportunity to chat to others with an interest in the park.

As always, we have the General Director of Opera Holland Park, Michael Volpe, to thank for the use of this weather-proof and scenic venue. We hope very much that Michael will join us, as it will be his last summer as General Director of the opera.

Pimm's, soft drinks and canapés will be served. Tickets, at £18 each, can be booked on the enclosed order form or via our website.

Annual General Meeting

Wednesday, 22 April 2020 at 7.30pm in the Orangery

Be sure to put 22 April in your diary and come along to our AGM. The formal part is usually over quickly and we have time to talk about what has been achieved over the past year and what needs to be done now. A great deal has been achieved in the past 12 months. This time last year, Holland House had been put on Historic England's At-Risk Register, and now we are well on the way to expert conservation. Woodland restoration has started, and some bare patches of muddy earth have been fenced off to give them a chance to regenerate. Plans are afoot for other improvements.

Often, when it seems things are improving, people do not feel they need to come to the AGM. But please do come, as there are still issues that need sorting out, as there will be with any park. Come and challenge us with thoughtful questions and share your ideas. The trustees need your support and want to know that we are representing you. As always, we will have the chance to catch up with each other over a glass of wine after the meeting. **I look forward to seeing lots of you on the 22 April.**

Jennie Kettlewell



JEROBOAMS
LONDON'S LOCAL WINE MERCHANT

What could possibly be better than a bottle of wine?

a MAGNUM of wine!

Pop in and see Kathy and the team at
96 Holland Park Ave, London,
or call on 020 7727 9359
Jeroboams.co.uk

Green Drive and Dutch Garden resurfacing

Green Drive is the road that runs between the Ilchester Gate and across the front of Holland House as far as the Duchess of Bedford Gate. It must be robust enough for cars and lorries, within park restrictions, but we do not want it to look like a bitumen motorway. The project is out for tender, with work expected to last four weeks and be finished before the opera takes up residence. The chosen surface is a light brown, rather than black tarmac, intended to blend in with the colours of Holland House. Stone kerbs will improve the current messy edge and encourage vehicles to keep to the road.

If you are wondering why the Dutch Garden path resurfacing is taking so long, it is because of adverse weather. The work cannot be carried out satisfactorily while wet, and will be completed as soon as the ground has dried out.



Green Drive

Gnomon gone, but not for long

Saul, one of the idverde gardening team, was working in one of the shrub beds when he was surprised to find the missing gnomon from the armillary sphere in the Dutch Garden. It is in fact the original, not the replacement ordered by The Friends after it was first stolen. It is currently in the safe custody of the Parks

Police, until Richard Rogers Conservation can return to weld it firmly into place.

Conservation of historic tiles

Now that conservation of the tiles in front of the café has been completed, we have received a tile-by-tile assessment of those on the upper walkway from Richard Rogers Conservation. This is currently being considered for approval by the Council Conservation Case Officer, so that work can be commissioned. The Friends have committed to paying for this expert work. We have also received a first report and estimate for work on the tiles in the old dairy, next to the Ice House. The first stage is to get the dairy building repaired, which will be done this autumn as part of the Holland House conservation project. We will then discuss the dairy tile report with the Council and decide how to proceed. It is considerably more expensive than the walkway tiles, so we will have until 2021 to ensure funds are in place. We hope that, eventually, the public will be able to see into the tiled dairy and even go into the room on occasions.

Green transport for Parks Police

When The Friends discovered that our Parks Police had no bicycle to travel between parks in the borough, we offered to buy one for them. Off they went and chose a smart black model that can carry what they need, including a defibrillator. PC Tom McGeehan looks pretty pleased with it in this photo. They are awaiting delivery of an electric police car.



P.C. Tom McGeehan with the police bike

Jennie Kettlewell

Spring, which heralds The Friends of Holland Park Annual Art Exhibition, is almost here, and I am pleased to announce that Ilchester Estates will again sponsor this year's art exhibition. Not only is their sponsorship a beautiful example and continuation of the Holland House and Ilchester arrangement of the past, it is their financial contribution that helps us promote the exhibition to a wider audience. It has been working: more people are finding out about the exhibition, then visiting, and buying. The painting of Holland House by Lady Ilchester will be on display again, as it was last year.

Also, I am delighted to announce that this year's Feature Artist is Annie Leach. Annie has been taking cuttings and drawing flowers since childhood. She trained at the Ealing School of Art, where she obtained a National Diploma in Design, before moving into the fashion industry as an assistant designer and

pattern cutter, later becoming a primary-school art teacher. Since giving up teaching, Annie paints every day, taking inspiration from the seasons as well as the local parks and front gardens she passes every day. Annie has exhibited with the Friends for many years, and her beautiful contemporary, rather than classical, botanical paintings will bring a spectacular splash of colour to the exhibition.

Could all artists please ensure that their exhibition details forms are with me by Friday, 27 March. Also, remember to indicate which Private View you would like to attend: Friday night or Saturday morning, otherwise you will not be sent tickets. We hope you will support The Friends of Holland Park by visiting the exhibition during the nine days in the Orangery, and telling your family, friends and neighbours to come along.

Gordon French

Art Exhibition Timetable

Friday, 27 March	Final date for completed artist exhibit details forms to be received to allow catalogue listing
Friday, 17 April	Artists deliver artworks to the Orangery, Holland Park, 8.30-11am All artists will be required to sign the catalogue to certify that all details shown are correct
Friday, 17 April	Hanging and judging, 11am-6pm
Friday, 17 April	Private View, 7.30-9.30pm
Saturday, 18 April	Private View, 10.30am-12.30pm (Exhibiting artists are entitled to one artist ticket and four complimentary guest tickets. To receive, artists will need to state the day, and number of tickets required.)
Saturday, 18 April	Exhibition open to the public, 1-6pm. Entry free of charge
Sunday, 19 to Sunday, 26 April	Exhibition open to the public 10.30am-6pm. Entry free of charge
Sunday, 26 April	Artists and buyers collect works, 6-7pm
Monday, 27 April	Artists and buyers collect works, 9-11am

Artists are particularly asked **not to collect their works before** 6pm on SUNDAY, 26 April

Lost Something in the Park?

The Parks Police have all sorts of lost property handed in to them: mobile phones, wallets, purses, spectacles, clothing, keys and, on the odd occasion, expensive jewellery.

Sergeant Chris Ellinson said: 'We make extensive enquiries to trace owners, and have a



great success rate of re-uniting them with their property, so, if anyone has lost anything in the park, please give us a call, as we might have it. We retain property for four weeks, after which we donate anything for which we cannot find an owner to a local charity.' The Parks Police can be contacted on 0300 365 5101.

The Japanese make a great event out of viewing spring cherry blossom, known as **Sakura**. Their festival usually starts in April, but flowering time varies by area and the type of cherry as well as the weather, so they publish a running cherry-blossom forecast for each year, showing where and when to see the most stunning blooms. This year the forecast explains that mild weather makes it likely that flowers will be relatively early, with the first being predicted for 21 March. Later flowering varieties might not put on their show until the end of April.

An expert at Kew thought that cherry blossom would also be early in the UK this year. We have a great many cherry trees (*Prunus*) in Holland Park, both Japanese and of other origins. One of our members was obsessed with the cherries in Holland Park, and used to insist that we took photos so that he knew in



*Cherry blossom in the Kyoto Garden,
as yet unidentified*

has a high graft and might be **Shirofugen**, or possibly its colour variant, 'Fugenzo'. Immediately to the north is another with a slightly more spreading shape, which we think is the famous **Kanzan** and the first entry in 'The Friends' Notable Trees in Holland Park guide. It looks spectacular when smothered in its double pink flowers.

Tai-haku, known as the Great White Cherry, is

another stunner, with large, dazzling, single white flowers. This was lost to cultivation in Japan, but a plant had been sent to England where it was discovered in 1923 and reintroduced to Japan. There is at least one in the Kyoto Garden, the largest being up behind and to the right of the fountain. You cannot walk right up to it, but you will certainly be able to see its blossom from the path.



*Cherry blossom in the Kyoto Garden,
as yet unidentified*

which order they flowered. It was this man who did his best to identify the trees we have, but many were planted years ago, and we are not certain we have named all correctly. This is work in progress, and very pleasant work it is too.

Do visit the park in March and April and keep an eye open for some pretty sights.

On the left, in grass, shortly after entering the Earls Court Gate, there are two lovely cherries. The first

Also, in the Kyoto Garden is what we believe to be a **Ukon**. Enter by the ramp gate and turn left where there is a smallish tree with flowers flushed creamy yellow, sometimes tinged with pink. To the north, but still in the Kyoto Garden, there is a grove of unidentified cherries; but the real mystery is a little cherry tree that is covered in bright pink flowers in February: very early. This year it was at its best on 3 February, but when we went to look at it on 7 February, all the flowers were on the ground, and the tree was bare, probably due to frost. A candidate is ***Prunus pendula* f. *ascendens* 'Rosea'**.

When we see a weeping cherry, and there are many in the Kyoto and Fukushima Gardens, we assume it is a **Cheal's Weeping cherry**, but we wonder if these are **Kiku-shidare-zakura** with which Cheal's is often confused and sometimes assumed to be the same thing. Cheal's is said to have more steeply pendant branches, and we can certainly see one that fits that description; so perhaps we have both. Kiku-shidare-zakura has deep pink double flowers. There is also a pretty weeping cherry on the West Lawn. The solution is for us to visit each of these weepers when they flower, and note the differences.

Walk to the Daffodil Island: up the path past the Ecology Centre, as if you were going to the D Garden, and stop just before you get to the junction with Lime Tree Walk. There is a triangular space with grass, a few trees and masses of daffodils in spring. First look for a big stump, and immediately downhill of that is a **Kanzan** (small and not very happy). Next is a **Shogetsu**, typically a small tree with a flat crown. Buds are pink-tinted, opening to double white flowers. The third tree is a **Shirofugen**, bearing large, pink, long-stemmed clusters of flowers.

Continue north to the D Garden and, in the border to the north of the gate, is a **Shirotae** with very large, snow-white, single flowers.



Kanzan

Prunus amanogawa is a small columnar tree with fragrant, semi-double pink flowers. There are three just inside the east wall of the sandpit, worth a visit to



Weeping blossom in the Kyoto Garden

see their clusters of fragrant, semi-double, shell-pink flowers.

And let's not forget the cherries with beautiful bark, but that's a story for another time.

Text and photos by Jennie Kettlewell and Rhoddy Wood

Once you have been inspired by Holland Park's cherries, why not drop in at Rassells plant nursery on Earls Court Road and buy a little cherry tree for your own garden. Or visit Havan just north of Rassells on Kensington High Street, where they plan to celebrate the cherry season with Japanese Sakura desserts, drinks and spring harvest green tea. Both offer a 10% discount for our members on production of a membership card.

Christmas Concert

Our carol concert on 8 December was as enjoyable as always. We were proud to have *Can it be True?* performed, a carol composed by Friend Richard Moore, this time in a slightly revised version. Thanks to Richard, Philip Simms the conductor and his choir, this was most enjoyable, so much so that a member

of the audience acquired a copy of it from one of the singers. Richard says that he does not keep a record of any possible performances for copyright reasons, and perhaps the lady in question simply wanted a memento of the piece. **However, he would be most grateful if she would kindly contact him on 020 7602 7564.**



Statement of Accounts

The Friends of Holland Park

Statement of Financial Activities for the year ended 31 December 2019

	2019 £		2018 £
Income from:			
Donations & legacies:			
Donations	18,780		38,418
Legacies	-	18,780	-
Charitable activities:			
Subscriptions		13,560	13,011
Other trading income:			
Events	20,685		19,674
Sale of merchandise	3,309		2,227
Advertising	2,104	26,098	4,119
Interest		199	137
Total incoming resources		58,637	77,585
Expenditure on:			
Raising funds:			
Fundraising	2,162		1,307
Event expenses	14,750		14,493
Cost of merchandise	3,128	20,040	1,315
Charitable activities:			
Newsletter	6,717		6,172
Grants & aims expenditure	30,834		20,379
Governance	381	37,932	346
Total resources expended		57,972	44,012
Net income/(expenditure)		665	33,573
Total funds brought forward		131,368	97,795
Total funds carried forward		132,033	131,368

Balance Sheet as at 31 December 2019

	£		£
Current assets:			
Debtors & prepayments	583		237
Deposit & current accounts	131,860	132,443	132,017
Creditors:			
Amounts falling due within one year		410	886
Net assets		132,033	131,368

idverde gardener, Marc Sinclair, had been growing a rainbow eucalyptus (*Eucalyptus daglupta*) in a pot in the nursery yard. After many years it had reached some two metres in height and was feeling cramped in its pot. Marc asked if we could find somewhere in the park to plant it: not easy because it does not like cold weather, and really is not hardy enough for the UK. We found a sheltered spot on the west margin of the North Lawn, and it was planted by Bartletts when they carried out our annual tree health work. We hope it does well there with Marc watching the weather forecast and intending to wrap the trunk with straw, Japanese-style, if the temperature is expected to dip below -3o C.



Eucalyptus daglupta

Bartletts also planted two American thorns to fill the gap in the line of trees on the west edge of the sports field. These thorn trees are a glorious sight when covered in berries and when the leaves glow with autumn colour.

This *Berberis* near the Duchess of Bedford Gate had just been cut back, and it was amazing to see the vivid yellow of the inside wood. Rhoddy Wood, who knows about these things, said: 'Well of course, and the wood of *Mahonia* is yellow too, both being part of the Berberaceae family'.

Text and photos: Jennie Kettlewell



American thorns on the sports field



Berberis showing yellow interior

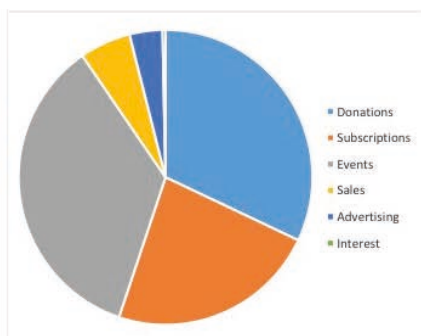
Notes on the Accounts for 2019

- Income was healthy at £58,637, but showed a drop against 2018 due to an unusually large donation in that year.
- Grants to the park (£30,834) showed a satisfactory increase against 2018 as we realised planned projects: historic tile restoration, Guide to the Birds in Holland Park, tree health, contribution to restoration of West Woodlands Enclosure, fencing to prevent compaction, and more.
- There was little change in funds carried forward. The total of £132,033 means we have sufficient to pay for some significant projects in 2020.

Statement of Accounts (*contd*)

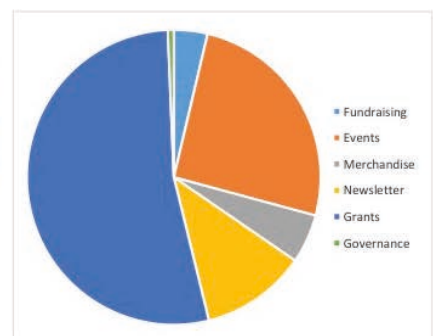
Income from:

Donations	18,780
Subscriptions	13,560
Events	20,685
Sales	3,309
Advertising	2,104
Interest	199



Expenditure on:

Fundraising	2,162
Events	14,750
Merchandise	3,128
Newsletter	6,717
Grants	30,834
Governance	381



Hi there **kids!**

This page is for you, with fabulous things to discover about Holland Park and fun activities to do.

Be a Bud Buddy!

Buds will be appearing on trees soon, all ready to turn into leaves in spring. Use the clues below to find the buds in the photos, and tick the ones you find.



Hawthorn

Clue: Look in the hedge on the left of the walk up from the Earls Court Gates.



Horse chestnut

Clue: Big tree with 5 trunks in Lime Avenue (see map on board outside Stable Yard).



Magnolia

Clue: There are some of these in the Rose Garden.



Hornbeam

Clue: Can you find a hedge on stilts behind Holland House?

Do your own drawing of a bud here

Do your own drawing of a bud here

Holland Park poem

*"The park is full of birds and flowers,
bees that buzz and foxes that bark.
Old Holland House had two big towers,
but a wartime bomb has left its mark.
We are lucky and can enjoy it all,
nature, old buildings, café and even
football."*

You can be a poet and write your own poem about Holland Park. Have a go and bring it along to the Holland Park Detectives event on 26 May.



Omar Owl says:
"Did you know?"

There's a secret passage that led from the basement of Holland House to the arcade in front of the café.

It used to be the route the owners of Holland House took when they walked to the summer ballroom (now the Belvedere Restaurant) in wet weather. The passage is now blocked up with rubble but you can see where the passage used to be if you look carefully.



The passage was behind this wall.

The Holland Park Detectives are back!

The detectives will be in the park again on **Tuesday 26 May**, during half term. Come along and test your spotting skills. Draw the best thing in Holland Park (colour pencils provided).

All activities are free and there is no need to book...just turn up!



The Friends talk often about the benefit of natural green space for mental and physical health as an important reason to take good care of Holland Park. There is increasing medical evidence to support this, but the thought is not a new one. This year the National Trust celebrates the 125th anniversary of its founding and its three founders, one of whom was Octavia Hill. She was a renowned social reformer whose main focus was providing decent affordable housing in London. The Octavia Group of today is the descendent of that work and still provides prize-winning schemes. Many of its projects, including the Kensington Day Centre, are in The Royal Borough, and especially W11.

Octavia understood that her residents needed outdoor space as well as indoor. It is to her campaigns to preserve suburban woodlands from being built on that we owe Hampstead Heath and Parliament Hill Fields. When she founded the National Trust, it was not to preserve grand houses from decay (that came later) but to preserve stretches of open country for



Reading in the woodlands

all to enjoy. She wrote: 'We all want quiet. We all want beauty...we all need space. Unless we have it, we cannot reach that sense of quiet in which whispers of better things come to us gently.'

Millions have visited those National Trust properties, including many from the cities. But for most this can

only be an occasional excursion: we do not have the time or resources to do so often. Octavia knew this herself: 'We want places to sit in, places to play in and places to spend a day in. We want, besides, places where the long summer evenings or the Saturday afternoon may be enjoyed without effort or expense.'

During Octavia's lifetime, Holland Park was privately owned by the Hollands and Ilchesters. Their gardeners would turn out any children who climbed over the wall to explore. Octavia would surely rejoice that the park is now open to all, and that the Friends work to keep some part of it quiet for people and nature.

Rhoddy Wood

Birds, Flowers and Beasties in the Park

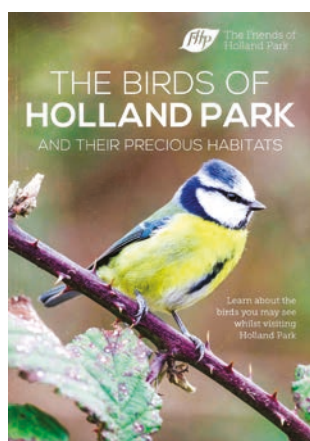
It is vital that we protect the flora and fauna we are fortunate to have in Holland Park, and that means being aware of what is there and looking after their habitats.

The RBKC Ecology Service is very active both with conservation and with education, and The Friends will once again sponsor many of the walks and talks in the Ecology Service 2020 programme. A booklet detailing the first six months' activities will be available from the Park Reception and the Ecology Centre from March. Here is a taster:

Beginners' Guide to Birdwatching:

Saturday, 21 March, 9-11.30 am

Led by professional ornithologist David Darrell-Lambert.



Spring Botany Walk:

Thursday, 2 April, 6-7.30 pm

Led by expert botanist Dr Mark Spencer.

Dawn Chorus Bird Walk:

Saturday, 25 April, 5-7 am

Led by professional ornithologist David Darrell-Lambert.

These events are funded by The Friends so that they can be free to participants. Booking is essential, and details of the

meeting point will be given at the time of booking. No dogs please.

It is likely that the Ecology Service will be updating some of its wildlife surveys this year, but you can view past surveys on the Ecology section of the RBKC website.

At last we are well on the way to getting the much needed conservation of Holland House **done**. An application for Planning and Listed Building Consent (PP/20/00298) was lodged by conservation architects Allies & Morrison on 14 January 2020. By the time you read this, the consultation will be closed, although we will not hear the decision until after 10 March.



Aerial view of Holland House

The Friends would like to be reassured that a buildings maintenance schedule will be agreed once works are completed, so that further damage is avoided.'

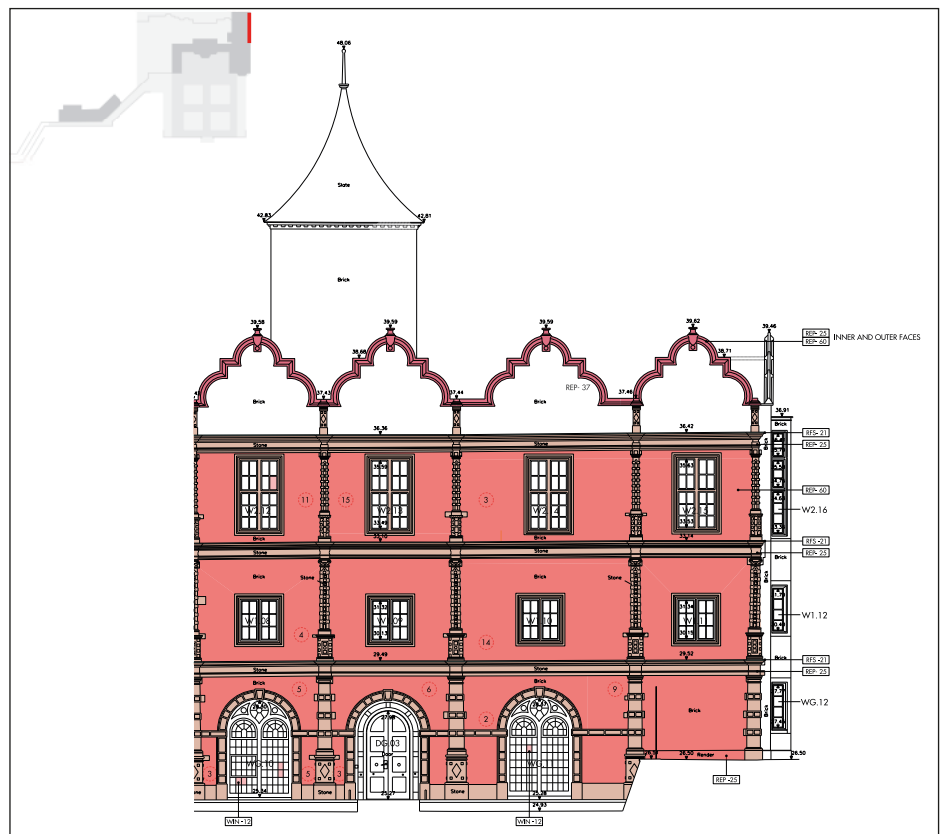
The roof of the main house and East Wing will be protected until the main work starts after the opera season in autumn 2020.

The Friends have been consulted throughout, have had details of the application explained, and our questions have been answered. You might be interested in the main points from our written response to the Council:

- We are pleased to note that
- The integrity of the historic building will be maintained, although some materials will be replaced.
- Access is being designed in order to facilitate future maintenance.
- Improved rainwater run-off measures will help to prevent further damage.
- The upper causeway 'path' will be resurfaced to improve water run-off and prevent water ingress to the lower causeway. The coping of the wall and faulty render will be replaced to reduce further damage to the historic tiles.
- Repairs to the roof, brickwork and masonry of the Old Dairy will be carried out to prevent further damage to the historic tiles.
- Repair conservation work will be carried out to the stone and brick facing of Holland House and the East Wing. As it is repair work, it is not included in the planning application.

We thank Council officers and the specialists at Allies & Morrison for involving the Friends throughout, so that we are able to support the application. It is so heartening to know that Holland House will be secure and look glorious once again.

If you look at the drawings on the application, one curiosity is how crooked the old house has become: like a proud old lady with arthritis. Not really surprising after all those years.



Drawing for planning application (the pink is a working colour code only).

Those of you who use your membership cards to receive discounts when shopping at some of our Friends & Neighbours (see the current list enclosed with this newsletter), might have noticed that the end of February is when your card expires. A new one is enclosed with this newsletter if our records show you as having paid your subscription for 2020. Your order form will be white. All subscriptions were due on 1 January except for those who joined after 1 September 2019. If we think you have not yet paid, there will be no membership card and your order form will be green with a standing order form on the back. Over 600 of our members use standing orders as it means they never have to remember again, and it helps our treasurer too.

Or you can pay using our website www.thefriendsofhollandpark.org or post a cheque, payable to The Friends of Holland Park, to Liz Merica's address, which you will find at the end of this newsletter.

Alternatively, you might prefer to pay by going onto our website (address above), and paying with your credit/debit card or PayPal. This avoids the hassle and expense of finding an envelope, cheque and stamp, but cannot be combined with a standing order. You can, however, click on a very obvious yellow button if you want to add a further donation, as some of our members do.

Current minimum rates are £12, or £9 for the over 65s, with joint subscriptions available for two people at the same address for £20, or £15 where both are over 65. You will agree these are very moderate sums, but we keep them low to enable all to join.

Our records are not infallible, so do contact Rhoddy on 020 7602 0304 or rhoddy.wood@virgin.net if you have a query. However you pay, we are most grateful for your support as it gives us clout in all our dealings with the Borough and other bodies.

Seeking Volunteers

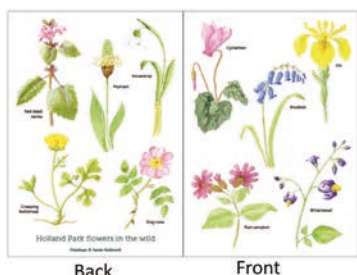
Following our last request, Rhoddy Wood, who still works extremely hard, has passed responsibility for the members' database to Liz Merica. Rhoddy will continue to respond to new member applications and to work with the much appreciated team of newsletter deliverers. She would, however, very much like someone to take over the fulfilment of orders for event tickets and merchandise.

Event bookings and merchandise orders come in the form of phone calls, written requests or payment via our website. Once the volunteer has payment, they will need to post the tickets or park guides to the address given. Stamps and stationery are supplied. Stocks of merchandise are kept in store, so only a small number of guides need be kept at home. It would be helpful if this person could also undertake a small number of tasks related to our database.

All 'The Friends' volunteers work at home on their own computer, which allows the tasks to be organised round other commitments. While not particularly onerous in terms of time, this role requires computer literacy, attention to detail and an understanding of the work of The Friends. You do not need to be a member currently.

We are also looking for a volunteer, possibly with marketing communications experience, to help publicise our events to the local community.

If you are interested, please contact Rhoddy Wood (Secretary) on rhoddy.wood@virgin.net, or Jennie Kettlewell (Chairman) on jenniekettlewell@aol.com to find out more and explore options.



Greetings card, with paintings on both back and front, but blank inside. includes envelope. 105 x 148 mm

£2.50 each.

Available from:

- Holland Park Reception in The Stable Yard
- Rhoddy Wood on 020 7602 0304 & rhoddy.wood@virgin.net
- Order on-line on www.thefriendsofhollandpark.org +P&P

**Cotton tea towel
£6.50**





Kensington Gardeners' Club

(Information from www.kensingtongardeners.co.uk or please contact 07949 769702).

Talks and club meetings take place in the basement lecture theatre at Kensington Central Library, Phillimore Walk. Free to members. Guests pay £5:

21 March, 2.30 pm: Sue and Bleddyn Wynn-Jones of Crûg Farm Plants discuss their search for exotic plants on their travels to Vietnam.

17 May, 2.00-6.00 pm: KGC members' garden opening — National Garden Scheme — Arundel & Ladbroke Gdns, W11 2LW.

21 May, 11.30 am: Visit to Pitzhanger Manor, Ealing. Free entrance for gardens, entrance fee for house and gallery. See website to book or ring number above.

30 May, 10.30 am: Kew Gardens Tree Walk in the Rhododendron Dell with Pat Smallcombe. Numbers limited, so please book. Cost £5.

Opera Holland Park

(All information from www.operahollandpark.com. Tickets available from 0300 999 1000):

2,5,9,11,13,18,20,24,26 June at 7.30 pm: **Eugene Onegin** by Tchaikovsky

6,10,12,17,19,23,25 June at 7.30 pm; 21 June matinee at 2.00 pm: **Rigoletto** by Verdi

18,22,24,28,30 July, 1 August at 7.30 pm: **The Merry Widow**, by Lehár

21,23,25,29,31 July at 7.30 pm: **Margot la Rouge** by Delius/**Le Villi** by Puccini

See website for pre-performance events.

The Kensington Society

(All information, on-line booking and details of 2020 events on www.kensingtonsociety.org/events):

21 April, 6.30 for 7.00 pm: Guy Oliver, trustee of Save Britain's Heritage at Dora House (Royal Society of Sculptors), talking about saving our heritage.

19 May, 6.30 for 7.00 pm: The Kensington Society's 2020 Annual General Meeting. Guest speaker George Clarke, architect, TV presenter and Kensington resident. Wine reception in Mayor's Parlour after the AGM. Free for members. Donations requested. Please book on KS website.

RBKC Active for Life

(Full details on www.rbkc.gov.uk/leisure-and-culture/sport-and-leisure, or ring 020 7938 8182:

A varied programme of physical activities in Kensington, from gentle walks to sport.

Thursdays, 10.30-11.30 am: Meet inside the Holland Park Café, then share a leisurely walk in the park.

President Sir Angus Stirling

Chairman Jennie Kettlewell

Secretary Rhoddy Wood

Membership Administrator Liz Merica

Treasurer Silvi Spassov

Events Organiser Graham Franklin

Editor and Minutes Secretary Joy Puritz

Publicity Nigel Brockmann

Art Exhibition Sandra French

Website Nicholas Hopkins

Trustee for Ecology Matters Richard Kulczycki

Park Observer Andy Walker

Our website address: www.thefriendsofhollandpark.org

OUR ADVERTISERS

That we are able to produce this quarterly newsletter for members is in no small measure thanks to the continued support of our advertisers. We are most grateful to them, and would ask you to show your thanks by supporting them, please.

Parks Police

Holland Park is generally a safe place, but we should never be complacent. If you see any antisocial behaviour, such as vandalism, please contact the Parks Police on:


0300 3655 101

Remember three key points:

- Keep yourself out of danger
- Take a description of the person, location and exactly what they are doing
- Contact the Parks Police and report the facts.

The cover photo of the Acacia pravissima (Oven's wattle) in the Rose Garden was taken by Friend Joan Bovarnik on 24 March 2019





Friends of Holland
Park Household
Insurance Scheme

10%
discount for
all members

Homes like yours need insurance like ours

Lycetts has nearly 60 years' experience of looking after the insurance needs of our clients. We offer specialist, impartial advice on your personal insurance and wealth management requirements, in addition to an extensive range of products and services for estates, farms, equestrian and commercial enterprises.

Lycetts
Insurance Brokers

0207 398 1660

jonathan.lloyd@lycetts.co.uk

www.lycetts.co.uk

Lycetts is a trading name of Lycett, Browne-Swinburne & Douglass Limited which is authorised and regulated by the Financial Conduct Authority.
Lycetts is a trading name of Lycetts Financial Services Limited which is authorised and regulated by the Financial Conduct Authority.

Proud to protect your home and your valued possessions